

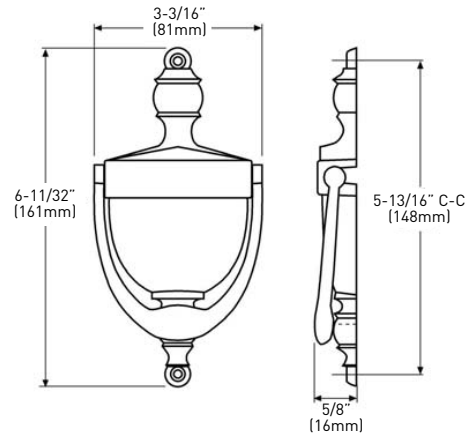
RESIDENTIAL HARDWARE

DOOR KNOCKERS & MAIL SLOTS

Taymor

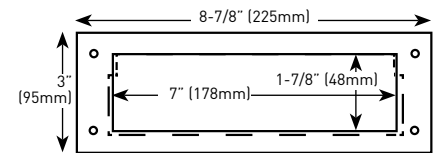
SURFACE MOUNT DOOR KNOCKER

- ZINC DIE-CAST CONSTRUCTION
- COMPLETE WITH MOUNTING SCREWS



	PKG	C3 POLISHED BRASS	C5 ANTIQUÉ BRASS	C10B OIL RUBBED BRONZE	C15 SATIN NICKEL	C17A ANTIQUÉ NICKEL	C19 MATTE BLACK	C26D SATIN CHROME	CASE PACK
81mm x 161mm [3-3/16" x 6-11/32"]	C	25-D4809B	25-D4809AB	25-D4809ORB	25-D4809SN	25-D4809AN	25-D4809BLK	25-D4809SC	10
C = CARDED									

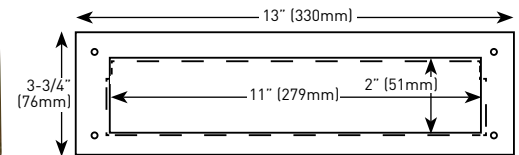
25-7340



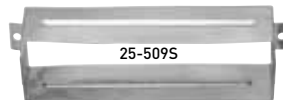
MAIL SLOT

- ALUMINUM CONSTRUCTION
- INTERLOCKING FLAP AND FRAME
- SPRING LOADED EXTERIOR PLATE
- MATCHING FINISH INTERIOR PLATE

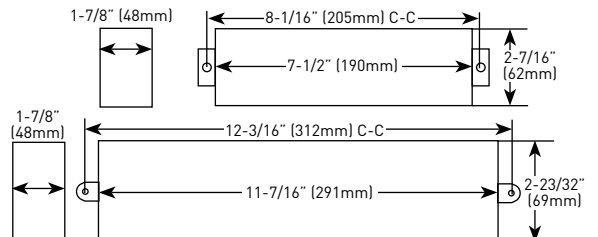
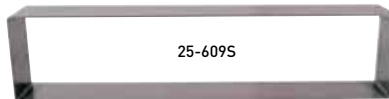
25-7360



	PKG	C3 POLISHED BRASS	C32D SATIN STAINLESS STEEL	CASE PACK
OPENING 48mm x 178mm [1-7/8" x 7"] OVERALL 76mm x 225mm [3" x 8-7/8"]	PB	25-7340PB	25-7340SS	10
OPENING 51mm x 279mm [2" x 11"] OVERALL 95mm x 330mm [3-3/4" x 13"]	PB	25-7360PB	25-7360SS	10
PB = POLY BAGGED WITH HEADER CARD				



25-609S



METAL SLEEVE INSERT

- STEEL CONSTRUCTION
- FOR MODELS 25-7340 & 25-7360 ONLY
- FOR 44mm [1-3/4"] HOLLOW CORE DOORS

	PKG	STEEL	CASE PACK
OPENING 56mm H x 189mm W x 44mm D [2-1/8" H x 7-7/16" W x 1-3/4" D] USED FOR 25-7340 ONLY	PB	25-509S	10
OPENING 67mm H x 289mm W x 44mm D [2-5/8" H x 11-13/16" W x 1-3/4" D] USED FOR 25-7360 ONLY	PB	25-609S	10
PB = POLY BAGGED WITH HEADER CARD			