

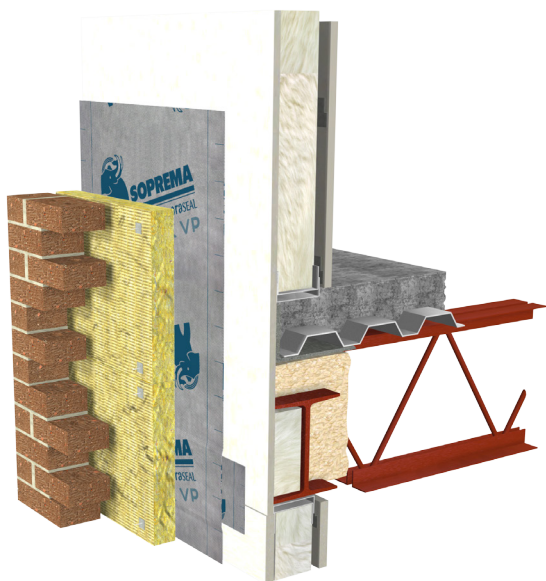


WATERPROOFING

SOPRASEAL[®] STICK VP WALLS



VAPOUR PERMEABLE AIR BARRIER MEMBRANE



SOPRASEAL STICK VP is a self-adhesive vapour-permeable air-barrier membrane with a tri-laminated polypropylene complex on its surface. Used in wall construction, it stands out due to its unmatched adhesive properties. Its width and self-adhesive underface, protected by a silicone release film, make it very easy to install. It can be used on most building surfaces, such as masonry, concrete, wood and gypsum.

- Better adhesive properties than competitive products
- No primer required
- UV exposure up to 180 days
- Self-sealing membrane ensuring continuous waterproofing

SURFACE PREPARATION

The substrate must be clean, sound, free of excess of water and loose materials, grease and any contaminants, which may compromise the performance of the product.

COMPLEMENTARY PRODUCT

12-INCH NEOPRENE ROLLER

Maximizes SOPRASEAL STICK VP membrane adhesion.

SOPRASEAL STICK VP

THICKNESS	0.6 mm (24 mil)
DIMENSIONS	0.95 x 30 m (37 in x 98 ft)
SURFACE	Tri-laminated polypropylene complex
UNDERFACE	Self-adhesive, covered with a silicone release film
WATER VAPOUR PERMEANCE (ASTM E96 - METHOD B)	972 ng/Pa·s·m ² (17 perm)



SOPREMA.US • 1.800.543.3085

SOPREMA.CA • 1.877.MAMMOUTH

INSTALLATION INSTRUCTIONS

1



Peel off the top portion of the silicone release film and adhere the membrane to the substrate, making sure the membrane is well aligned.

2



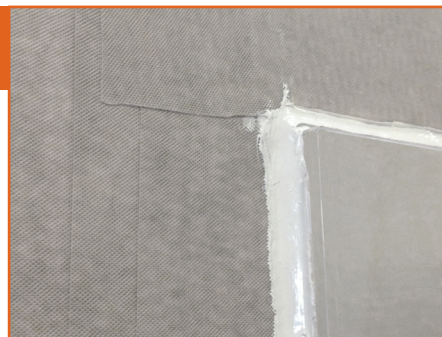
Gradually peel off the remaining silicone release film, making sure the membrane adheres completely to avoid air pockets and wrinkles.

3



Use a roller to apply pressure over the entire surface of the membrane to ensure uniform adhesion to substrate.

4



Use a compatible sealant to seal around details, reverse laps and critical areas.

If you have any questions about this product or its installation, please contact your SOPREMA representative.



SOPREMA.US • 1.800.543.3085

SOPREMA.CA • 1.877.MAMMOUTH